

Great Lakes Wellhead, Inc. – Company Profile

Operating out of four locations strategically placed in: Michigan, Ohio, Pennsylvania, Indiana (Opening Soon!)

Great Lakes Wellhead, Inc., has been in the oil and gas business since 1985. We are experts in pressure control systems with deep and broad experience in both conventional and multi-bowl solutions.

Our versatility and capacity to handle large volume orders and individual, custom solutions makes Great Lakes Wellhead the right choice for small to medium operators looking for value and responsiveness that is difficult for Tier 1 suppliers to deliver. Our shops can handle your needs.

- **Design – Sales – Service**
- **Wellhead Data Collection (PHMSA)**
- **Production Wellhead Maintenance**
- **Lubricator / Dry Rod**
- **Procurement**
- **Stamped Pipe Fittings**
- **Crane Truck**
- **Slip Jacks**
- **Safety and Education**



**GREAT LAKES
WELLHEAD, INC.**

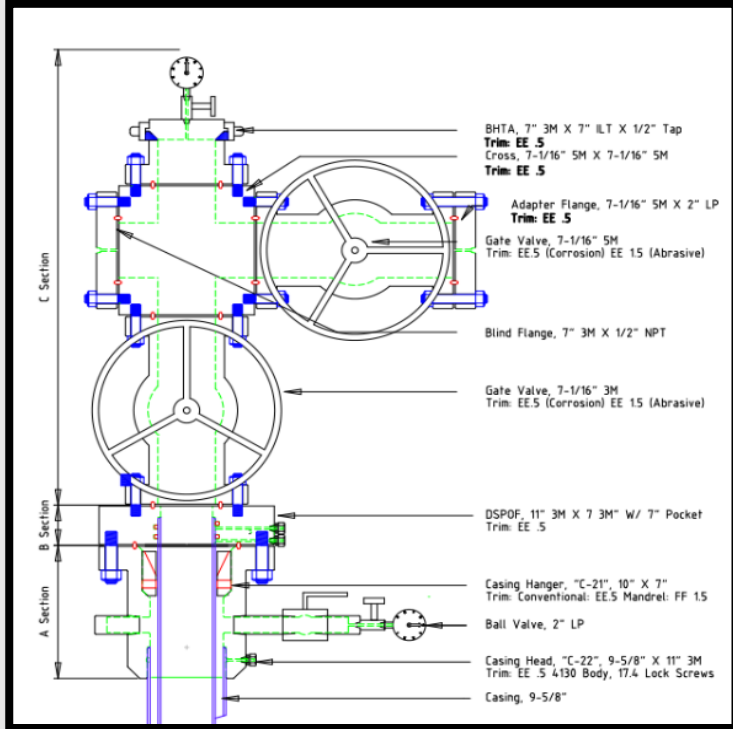
Safer | Better | Stronger

Grawn, MI

St. Clairsville, OH

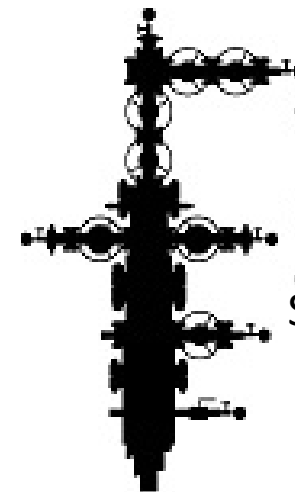
Wellsboro, PA

www.glwinc.us | sales@glwinc.us | 1(888) 514-9100



Design – Sales - Service

- New Drills, Wellhead Replacement, Well Servicing
- MBS or Traditional Casing Heads
- Solutions for Unique Downhole Challenges
- Service All Types of Wellheads and Valves
- Seal Testing and Troubleshooting
- API 6A/6D, ANSI



**GREAT LAKES
WELLHEAD, INC.**

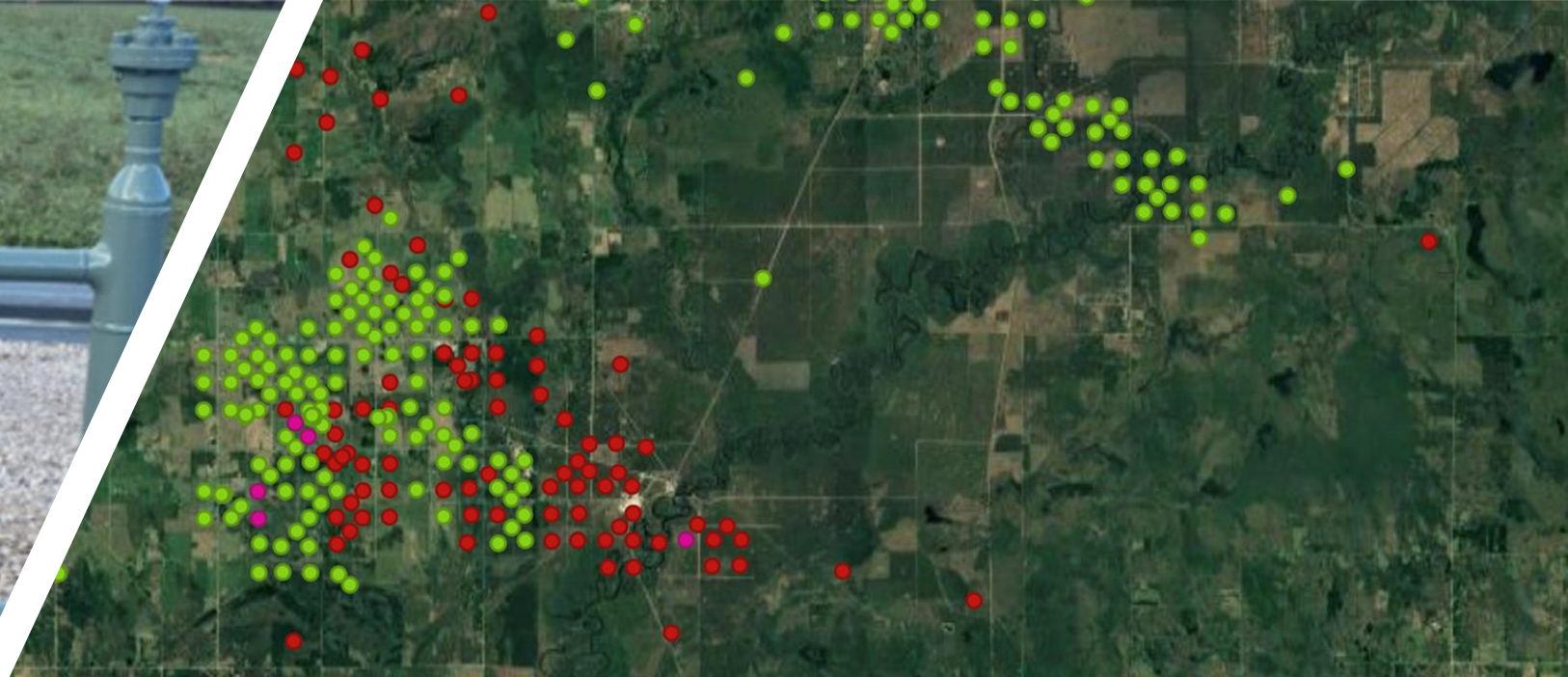
Safer | Better | Stronger

Grawn, MI

St. Clairsville, OH

Wellsboro, PA

www.glwinc.us | sales@glwinc.us | 1(888) 514-9100



Wellhead Data Collection

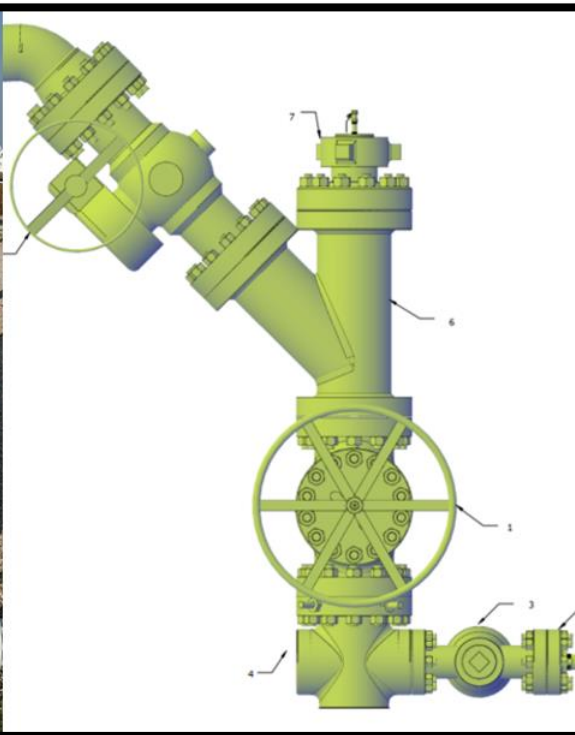
- Wellhead Seal Testing and Valve Maintenance Programs
- Leak Detection and Repair (LDAR for Methane, CO₂, H₂S)
- Inventory Valuation and Asset Management of Field Assets
- Wellhead Integrity Evaluations (Safety and PHMSA Audit Risk Models)
- Emergency Response Data Planning



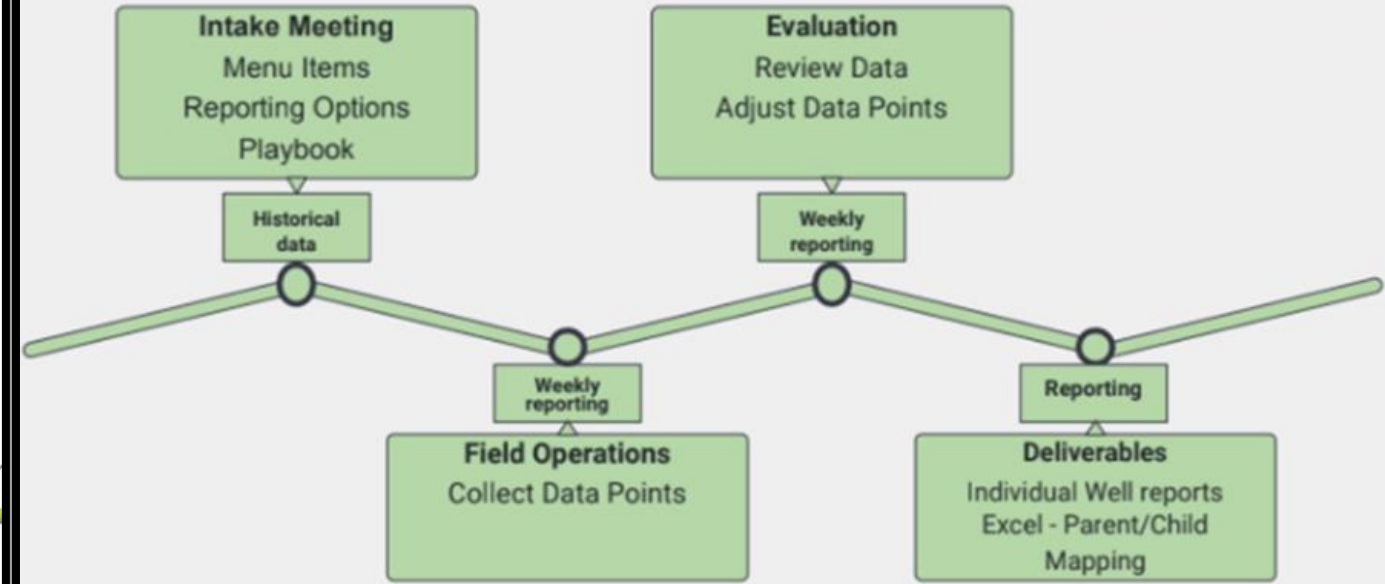
**GREAT LAKES
WELLHEAD, INC.**

Safer | Better | Stronger
Grawn, MI
St. Clairsville, OH
Wellsboro, PA

www.glwinc.us | sales@glwinc.us | 1(888) 514-9100



Project Workflow



Wellhead Data Collection

- Wellhead Component Identification for PHMSA Reporting
- CAD Drawings of Existing Equipment
- Data Mapping of Well Issues
- Delivered Report of Every Well Available Online



**GREAT LAKES
WELLHEAD, INC.**

Safer | Better | Stronger
Grawn, MI
St. Clairsville, OH
Wellsboro, PA



Production Wellhead Maintenance

- Service and Rebuild 6A and Orbit Valves
- Service 6D Ball Valves
- Service and Rebuild ESD Valves
- Machine Work on Gates and Stems
- Diaphragm Repair
- Controller Repair/Replacement
- Canister Testing



**GREAT LAKES
WELLHEAD, INC.**

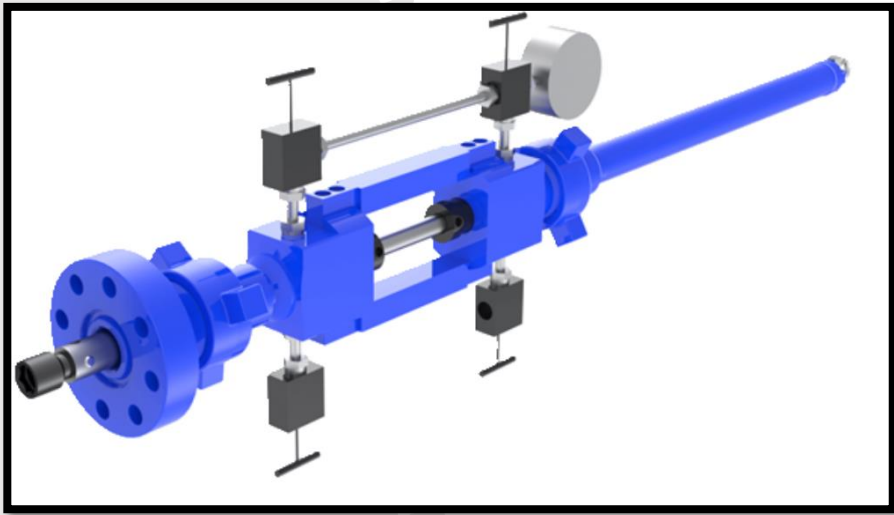
Safer | Better | Stronger

Grawn, MI

St. Clairsville, OH

Wellsboro, PA

www.glwinc.us | sales@glwinc.us | 1(888) 514-9100



Lubricator / Dry Rod

- Dry Rod / Lubricator for Wellbore Isolation
- VR Plug Lubricator
- BPV Thread Cleaning





Procurement

- Procurement of Oilfield Casing Tubular Goods
- Partnerships With Many Distributors
- Price Check Your Local Vendors
- Casing Pups and Couplings for Wellhead Replacement
- Tubing Replacement Programs



**GREAT LAKES
WELLHEAD, INC.**

Safer | Better | Stronger

Grawn, MI

St. Clairsville, OH

Wellsboro, PA

www.glwinc.us | sales@glwinc.us | 1(888) 514-9100



Steel Pipe - Size, Schedule and Flow Rates

Standard Pipe - Schedule 40

PIPE SIZE	OD	WALL	ID	INT AREA	WT/ FT	GPM @ 2 FPS	GPM @ 5 FPS	GPM @ 10 FPS	GPM @ 15 FPS	GPM @ 20 FPS	GPM @ 25 FPS
1/8	.405	.068	.269	.057	.245	.95	.99	1.8	2.7	3.5	4.4
1/4	.540	.088	.364	.104	.425	.85	1.6	3.2	4.9	6.5	8.1
3/8	.675	.091	.493	.191	.567	1.2	3.0	6.0	9.0	12.0	15.0
1/2	.840	.109	.622	.304	.852	1.9	4.8	9.5	12.0	19.0	23.8
3/4	1.050	.113	.824	.533	1.132	3.3	8.4	16.7	25.1	33.4	41.8
1	1.315	.133	1.049	.854	1.579	5.4	13.5	27.0	40.6	54.1	67.7
1 1/4	1.650	.140	1.380	1.495	2.273	9.4	23.4	46.8	70.3	93.7	117
1 1/2	1.900	.145	1.610	2.036	2.718	12.7	31.9	63.7	95.6	127	159
2	2.375	.154	2.067	3.356	3.653	21.0	52.5	105	157	210	263
2 1/2	2.875	.203	2.469	4.788	5.793	30.0	75.0	150	225	300	375
3	3.500	.216	3.068	7.393	7.575	46.3	116	232	347	463	579
3 1/2	4.000	.226	3.548	9.886	9.109	61.9	155	310	465	619	774
4	4.500	.237	4.026	12.73	10.79	79.7	199	399	598	797	997
4 1/2	5.000	.247	4.506	15.95	12.54	99.9	250	499	749	998	1249
5	5.563	.258	5.047	20.01	14.82	125	313	627	940	1253	1567
6	6.625	.280	6.065	28.89	18.97	181	452	904	1357	1810	2262
7	7.625	.301	7.023	38.74	23.54	243	607	1213	1820	2427	3033
8	8.625	.322	7.981	50.03	28.55	313	783	1567	2350	3134	3917
10	10.75	.365	10.02	78.85	40.48	494	1235	2470	3705	4940	6175
12	12.75	.406	11.94	111.9	53.56	701	1753	3506	5259	7012	8765

Extra Strong Pipe - XS - Schedule 80

WALL	ID	INT AREA	WT/ FT	GPM @ 2 FPS	GPM @ 5 FPS	GPM @ 10 FPS	GPM @ 15 FPS	GPM @ 20 FPS	GPM @ 25 FPS	PIPE SIZE
.095	.215	.036	.314	.23	.57	1.1	1.7	2.3	2.8	1/8
.119	.302	.072	.535	.45	1.1	2.2	3.4	4.5	5.6	1/4
.126	.423	.141	.738	.88	2.2	4.4	6.6	8.8	11.0	3/8
.147	.546	.234	1.087	1.5	3.7	7.4	11.0	14.7	18.3	1/2
.154	.742	.433	1.473	2.7	6.8	13.6	20.3	27.1	33.9	3/4
.179	.957	.719	2.171	4.5	11.3	22.5	33.8	45.0	56.3	1
.191	1.278	1.283	2.996	8.0	20.0	40.1	60.2	80.3	100	1 1/4
.200	1.500	1.767	3.631	11.1	27.7	55.3	83.0	110	138	1 1/2
.218	1.939	2.853	5.022	18.5	46.2	92.5	139	185	231	2
.276	2.323	4.238	7.061	26.5	66.4	133	199	265	332	2 1/2
.300	2.900	6.605	10.25	41.4	103	207	310	414	517	3
.318	3.364	8.888	12.50	55.7	139	278	418	557	696	3 1/2
.337	3.826	11.50	14.98	72.0	180	360	540	720	900	4
.355	4.290	14.45	17.61	90.5	226	453	679	905	1132	4 1/2
.375	4.813	18.19	20.78	114	285	570	855	1140	1425	5
.432	5.761	26.07	28.57	163	408	816	1225	1633	2041	6
.500	6.625	34.47	38.05	216	540	1080	1620	2160	2699	7
.500	7.625	45.66	43.39	286	715	1430	2145	2861	3576	8
.594	9.562	71.81	64.40	450	1125	2249	3374	4498	5623	10
.688	11.37	101.61	88.57	636	1591	3162	4774	6365	7956	12

Schedule 160 Pipe

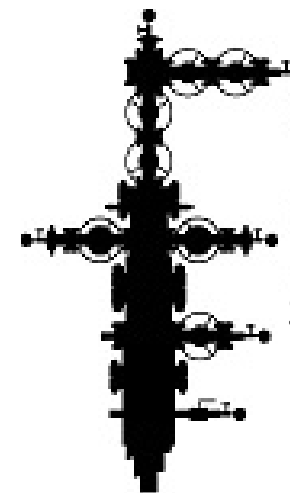
PIPE SIZE	OD	WALL	ID	INT AREA	WT/ FT	GPM @ 2 FPS	GPM @ 5 FPS	GPM @ 10 FPS	GPM @ 15 FPS	GPM @ 20 FPS	GPM @ 25 FPS
1/2	.840	.187	.466	1.71	1.310	1.07	2.67	5.34	8.01	10.7	13.4
3/4	1.050	.218	.587	.271	1.940	1.70	4.24	8.40	12.7	17.0	21.2
1"	1.315	.250	.815	.522	2.850	3.27	8.17	16.3	24.5	32.7	40.8
1 1/4	1.650	.250	1.160	1.060	3.764	6.62	16.6	33.1	49.7	66.2	82.8
1 1/2	1.900	.281	1.338	1.410	4.952	8.91	22.0	44.0	65.1	86.1	110
2	2.375	.343	1.689	2.241	7.450	14.0	35.1	70.2	105	140	175
2 1/2	2.875	.375	2.125	3.542	10.01	22.2	55.5	111	167	222	278
3	3.500	.437	2.626	5.416	14.30	33.9	84.8	170	254	339	424
4	4.500	.531	3.438	9.283	22.52	58.2	145	291	436	582	727
5	5.563	.625	4.313	14.51	33.0	91.5	229	458	686	915	1144
6	6.625	.718	5.189	21.15	45.30	132	331	662	994	1325	1656
8	8.625	.906	6.813	36.44	74.70	230	571	1142	1713	2384	2855
10	10.75	1.125	8.500	66.75	115.64	355	889	1777	2666	3555	4443
12	12.75	1.312	10.126	80.53	160.33	504	1261	2523	3784	5045	6306

Double Extra Strong Pipe

WALL	ID	INT AREA	WT/ FT	GPM @ 2 FPS	GPM @ 5 FPS	GPM @ 10 FPS	GPM @ 15 FPS	GPM @ 20 FPS	GPM @ 25 FPS	PIPE SIZE
.294	.252	.050	1.714	.32	.79	1.6	2.4	3.1	3.9	1/2
.308	.434	.148	2.440	.93	2.3	4.6	6.9	9.2	11.6	3/4
.358	.599	.282	3.659	1.8	4.4	8.8	13.3	17.7	22.1	1"
.382	.896	.630	5.214	4.0	9.9	19.8	29.6	39.5	49.4	1 1/4
.400	1.100	.950	6.408	6.0	14.9	29.8	44.6	59.5	74.4	1 1/2
.496	1.503	1.774	9.029	11.1	27.9	55.6	83.4	111	139	2
.552	1.771	2.463	13.70	15.4	38.6	77.1	116	154	193	2 1/2
.600	2.300	4.154	18.58	26.0	65.1	130	195	260	325	3
.674	3.152	7.803	27.54	48.9	122	244	367	488	611	4
.750	4.063	12.97	38.55	81.2	203	406	609	812	1015	5
.864	4.897	18.83	53.15	118	295	590	885	1190	1475	6
.875	6.875	37.12	72.42	233	581	1163	1744	2325	2907	8
1.000	8.750	60.13	104.1	377	942	1883	2825	3767	4709	10
1.000	10.75	90.76	125.5	569	1421	2843	4264	5686	7107	12

Stamped Pipe Fittings

- GLW Stock Stamped Pipe Fittings
- Traceability of Wellhead Equipment
- Easily Identify Pressure Ratings



**GREAT LAKES
WELLHEAD, INC.**

Safer | Better | Stronger
Grawn, MI
St. Clairsville, OH
Wellsboro, PA



Crane Truck

- Mobile Maintenance Truck
- 7,500 lb Stellar Crane
- Available When 3rd Party Equipment is not on Site to Assist with Lifting Wellhead Equipment

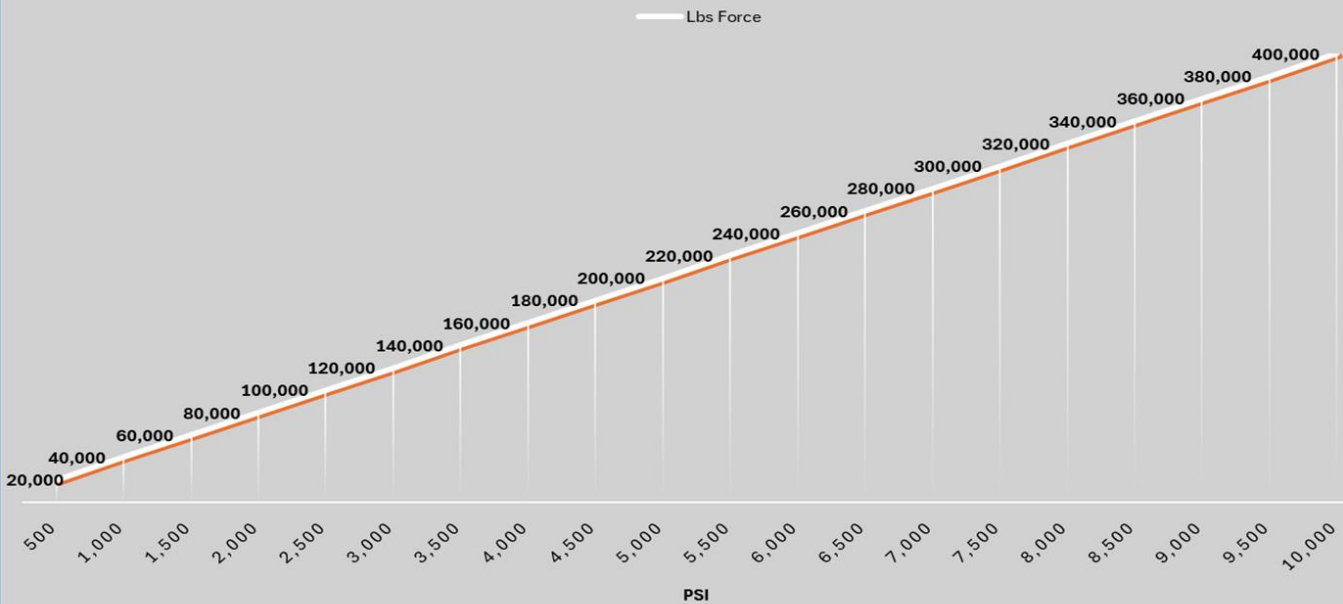


**GREAT LAKES
WELLHEAD, INC.**

Safer | Better | Stronger
Grawn, MI
St. Clairsville, OH
Wellsboro, PA

www.glwinc.us | sales@glwinc.us | 1(888) 514-9100

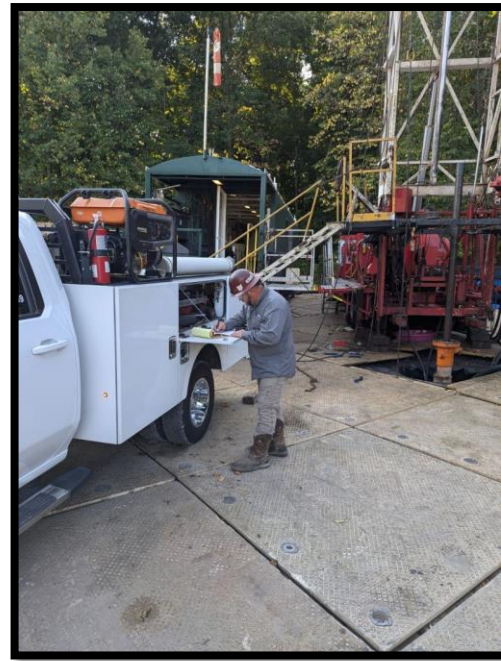
LBS FORCE AND GAUGE PSI



Slip Jacks

- 200T Max Pull
- 7" of Usable Stroke Before Resetting Slips
- Good for Stuck Slips and Assisting with Casing Cuts
- Do not Exceed 80% of Weakest Connection





Safety and Education

- Safety and Education Are a Priority at GLW
- Contact GLW Today to Schedule a Valve Maintenance 101 Course
- Learn About Our BBS Program
- Ask for a 3D Model Quote of Your Wellhead

**GREAT LAKES
WELLHEAD, INC.**

Safer | Better | Stronger
Grawn, MI
St. Clairsville, OH
Wellsboro, PA

www.glwinc.us | sales@glwinc.us | 1(888) 514-9100